

Endurance

Seating Upholstery Collection

Dolce

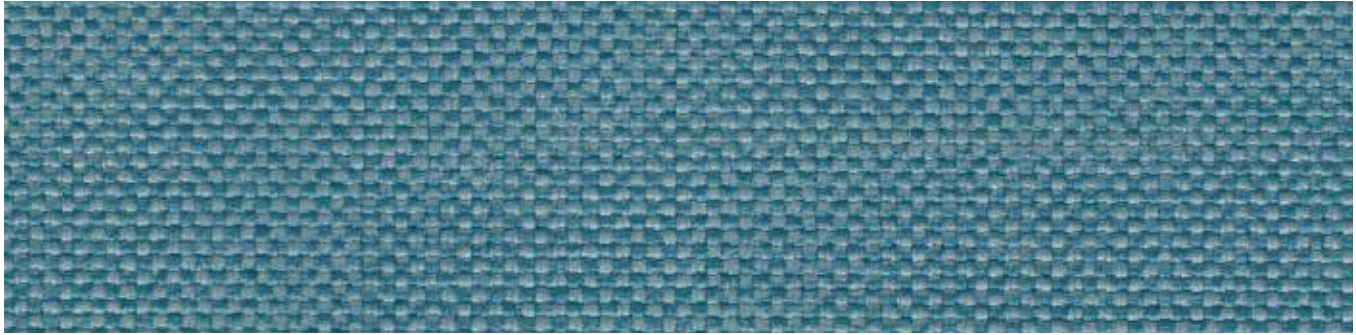
Masquerade

Sedona

Silvertex



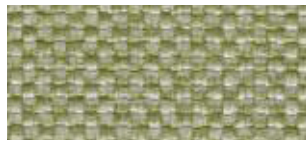
41611 Desert



41610 Sapphire



41612 Vanilla



41601 Sage



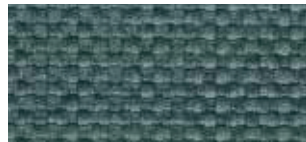
41615 Sky



41616 Aqua



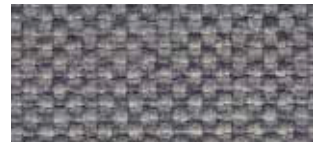
41613 Viridian



41614 Aegean



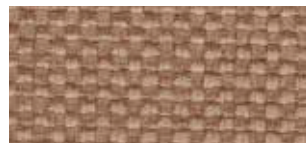
41609 Indigo



41608 Wisteria



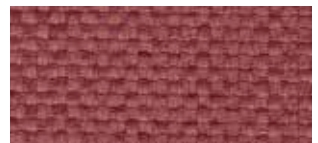
41602 Goldenrod



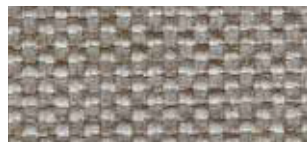
41604 Clay



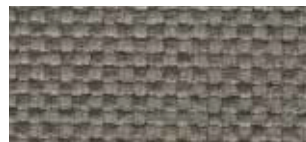
41603 Coral



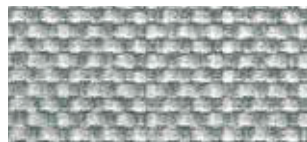
41605 Rose



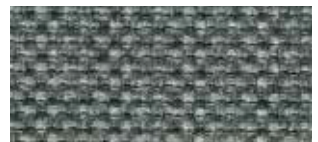
41617 Driftwood



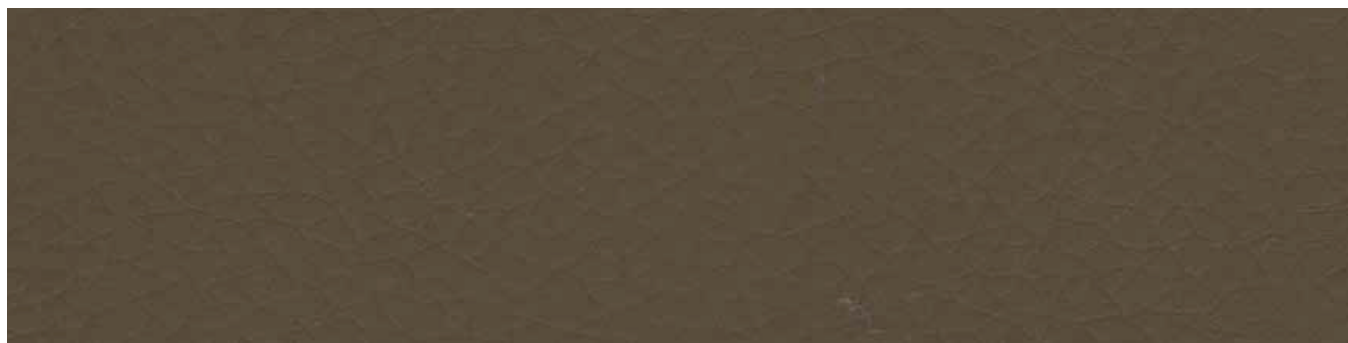
41606 Truffle



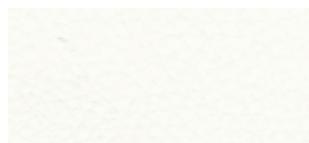
41600 Alaska



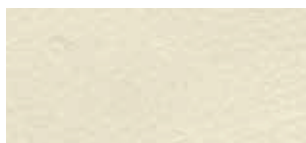
41607 Thunder



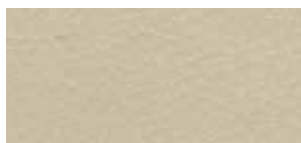
11901 Mocha



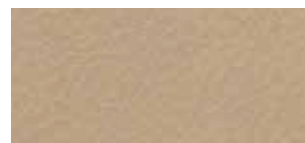
11916 White



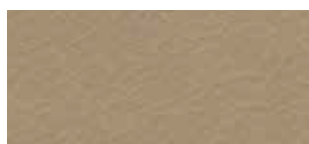
11915 Ivory



11919 Ecru



11920 Dune



11914 Latte



11922 Cumin



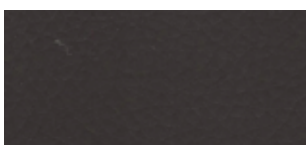
11918 Mushroom



11917 Camel



11923 Russet



11912 Chocolate



11926 Moss



11906 Grass



11910 Tangelo



11909 Poppy



11908 Fuchsia



11907 Citron



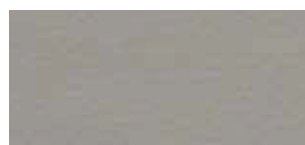
11905 Peacock



11927 Jet



11904 Indigo



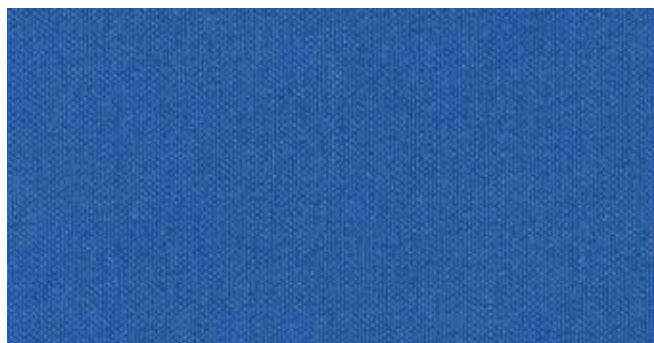
11903 Artesian



11902 Meteor



11900 Black



41321 Marine Blue



41302 Ice



41314 Cream



41319 Lagoon



41320 Turquoise



41334 Plata



41309 Storm



41310 Sapphire



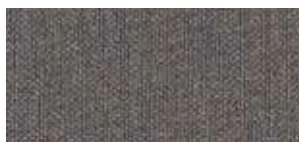
41308 Jet



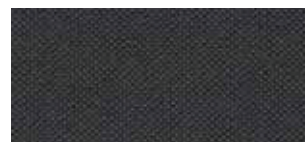
41335 Sterling



41326 Neutra



41313 Meteor



41307 Carbon



41329 Creme De Menthe



41330 Acid



41301 Basil



41325 Bottle



41337 Limoncello



41336 Zest



41312 Celery



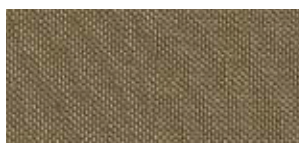
41324 Sage



41332 Bazaar



41311 Champagne



41327 Marsh



41331 Peat



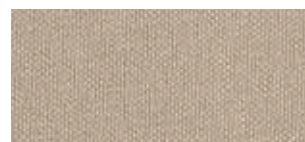
41303 Mandarin



41315 Chestnut



41328 Bronze



41317 Taupe



41333 Imperial



41305 Poppy



41322 Umber



41316 Luggage



41318 Borscht



41304 Raspberry



41323 Blackberry



41306 Mocha



22171 Fawn



22141 Sand



22115 Tumbleweed



22177 Canyon



22131 Adobe



22142 Terra Cotta



22123 Sierra



22173 Mahogany



22174 Truffle



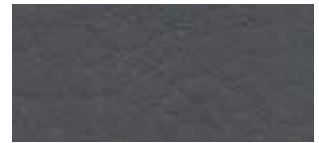
22168 Pewter



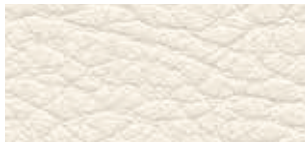
22151 Plateau



22170 Storm



22185 Nighthawk



22145 Buckskin



22167 Fog



22129 Mirage



22133 Sassafras



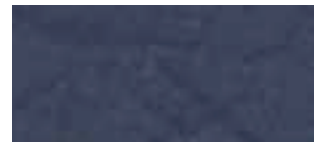
22138 Botanical



22140 Paradise



22139 Midnight



22162 Indigo



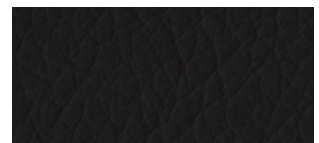
22137 Molten



22126 Poppy



22143 Earth



22147 Mesa

Care and Cleaning Guides

Dolce:

- Step 1: We recommend cleaning at least once a week to extend the lifespan of the upholstery, which will prevent dirt and contamination buildup and permanent staining. In the event of a spill, wipe off any excess right away with a dry white cloth or fabric, but careful not to spread to remaining surface.
- Step 2: Clean the whole surface in a circular motion using liquid hand soap (pH neutral) and water (1 part soap to 9 parts water). Check the Approved Cleaners guide for recommended cleaning products. Wipe with a clean damp cloth to get rid of any excess soap. Repeat as needed and then let dry.
- Step 3: Once a month, you can use a soft-bristle brush for a deeper cleaning. Remember, light colors need more care, more often.

Masquerade, Sedona and Silvertex:

- Step 1: We recommend cleaning at least once a week to extend the lifespan of the upholstery, which will prevent dirt and contamination buildup and permanent staining. In the event of a spill, wipe off any excess right away with a dry white cloth or fabric, but careful not to spread to remaining surface.
- Step 2: Clean the whole surface in a circular motion using liquid hand soap (pH neutral) and water (1 part soap to 9 parts water). Check the Approved Cleaners guide for recommended cleaning products. Wipe with a clean damp cloth to get rid of any excess soap. Repeat as needed and then let dry.
- Step 3: If there is any buildup that cannot be removed with soapy water, a mixture of 1 part isopropyl alcohol to 9 parts water can be used as a last resort. (Remember, using alcohol on a regular basis can affect the properties of the product).
- Once a month, you can use a soft-bristle brush for a deeper cleaning. Remember, light colors need more care, more often.

2021 Spradling International, Inc.®

The information published in this care guide refers to the performance of the products in specific tests conducted under laboratory conditions. Results may vary under actual conditions.

This information is not a guarantee and does not relieve the user from the responsibility of the proper and safe use of the product and all cleaning agents. The use of certain agents can be harmful to the surface appearance and lifespan of vinyl. Spradling, its agents, and assigns assume no responsibility resulting from the use of such cleaning agents to the vinyl.

In addition to cleaning, healthcare facilities maintain disinfecting regimens to reduce the spread of infections. There is a wide variety of available biocides that include bleaches, peroxides and quaternary ammonium products, among others. They should always be used at the recommended dilution, never in concentrated form. To prolong the life of coated fabrics, the disinfectants should be rinsed off after each use. It should be noted that misuse of disinfectants is the major source of surface deterioration. Spradling International, Inc.® continually evaluates cleaners/disinfectants, and a list of those tested can be found on our website.

Abrasion test results exceeding ACT Performance Guidelines are not an indicator of product lifespan. Multiple factors affect fabric durability and appearance retention. DOLCE™ and Hi-Loft2™ are trademarks of Spradling Holdings, Inc.®

PERMABLOK[®] PLUS[®], PERMABLOK[®] and SILVERTEX[®] NEO are registered trademarks of Spradling Holdings, Inc.®

For more information visit www.spradling.group



Manufactured exclusively for Spradling International, Inc. Proquinal S.A., Columbia, and Proquinal Costa Rica S.A. - An ISO 9001, TS 16949 company

Endurance

	Dolce	Masquerade*	Sedona*	Silvertex*
Grade	2	4	2	3
Content	100% Polyurethane	100% Vinyl	100% Vinyl	100% Vinyl
Finish/Backing	Stain Resistant/100% Rayon	PERMABLOK®/ Hi-Loft™ Polyester	PERMABLOK3® PLUS+/ Hi-Loft™ Polyester	PERMABLOK®/ Hi-Loft™ Polyester
Antimicrobial	No	No	No	Bacterial Resistant AATCC 147 Mildew Resistance ASTM G21
Phthalates	No	No	Yes	Yes
Flame Retardants	No	No	No	No
Repeat - Horizontal/Vertical	None	None	None	None
Railroad	No	No	No	No
Width	54"	54"	54"	54"
Abrasion ASTM D4157 Wyzenbeek	100,000 Double Rubs	100,000 Double Rubs	100,000 Double Rubs	100,000 Double Rubs
Colorfastness To Light	4.0 Rating (UV Stability ASTM D1148)	1,000 Hrs (Xenotest AATCC TM 16-3/NTC 1479/CFFA-2a- Blue Wool)	1,000 Hrs (Xenotest AATCC TM 16-3/NTC 1479/CFFA-2a- Blue Wool)	1,000 Hrs (Xenotest AATCC TM 16-3/NTC 1479/CFFA-2a- Blue Wool)
Crocking CFFA 7/Fed. Std. 191A M 5651	Excellent 4.0 Rating	Excellent 4.0 Rating	Excellent 4.0 Rating	Excellent 4.0 Rating
Seam Strength	60 Lbs Warp, 60 Lbs Weft ASTM D-1683-07A	46 Lbs Warp, 35 Lbs Weft CFFA-14	46 Lbs Warp, 35 Lbs Weft CFFA-14	46 Lbs Warp, 35 Lbs Weft CFFA-14
Hydrolysis Resistance	5-Week Hydrolysis	N/A	N/A	N/A
California TB 117-2013	Pass	Pass	Pass	Pass
NFPA 260	Class 1	Class 1	Class 1	Class 1
UFAC	Class 1	Class 1	Class 1	Class 1
Cleaning	Mild Soap/Water	Mild Soap/Water	Mild Soap/Water	Mild Soap/Water
Bleach Disinfectable	10% Bleach/Water Solution	10% Bleach/Water Solution	10% Bleach/Water Solution	10% Bleach/Water Solution

See inner card panel for additional cleaning information

Dye Transfer/ Reverse Crocking

Some upholsteries may experience dye transfer (clothing dyes transfer to the seating fabric). This does not mean that the fabric of application is deficient, but rather it is an inherent characteristic of that fabric or application and is considered normal behavior. Silvertex: Once the dye transfer occurs, it is irreversible. Sedona: Once the dye transfer occurs and using routine cleaning, it can normally be removed due to Sedona's ink removal properties.

*-appropriate for healthcare environments